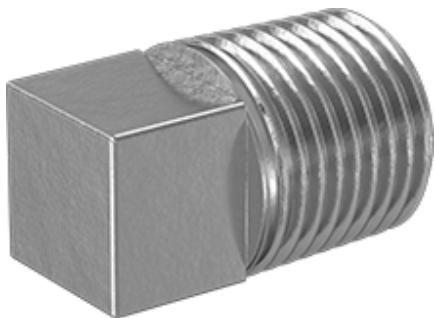




Low-Pressure Aluminum Pipe Fitting

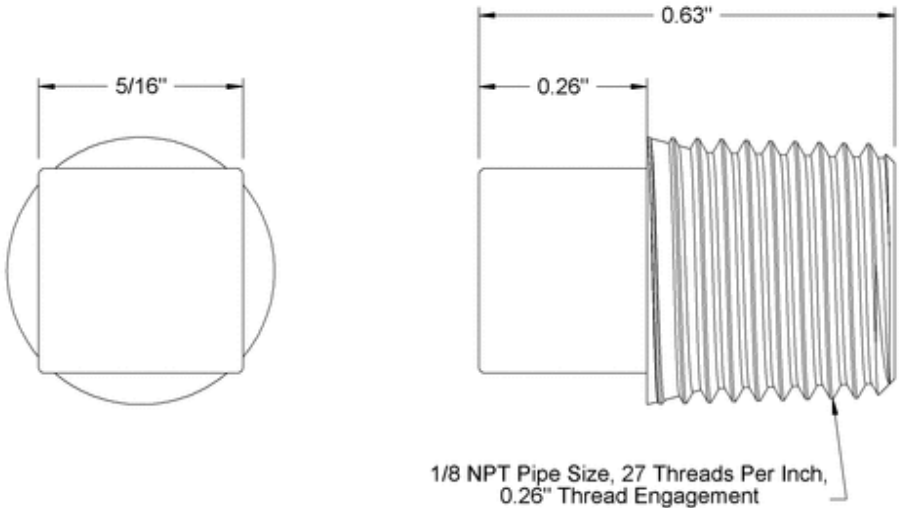
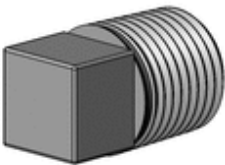
Plug with External Square Drive, 1/8 NPT Male

\$2.78 Each
44705K382



For Use With	Air, Oil, Water
Shape	Cap/Plug
Type	Plug
Drive Style	External Square
Body Shape	Square
Class	150
Connection Type	Pipe
Connection Style	Threaded
Connection	NPT Male
Pipe Size	1/8
Length	5/8"
Plug Construction	Solid
Maximum Pressure	150 psi @ 72° F
Material	Aluminum
For Pipe	
Schedule	40
Material	Aluminum
For Flange	
Class	125
Material	Aluminum
RoHS	RoHS 3 (2015/863/EU) Compliant
REACH	REACH (EC 1907/2006) (01/16/2020, 205 SVHC) Compliant
Country of Origin	United States

In addition to being lightweight, these aluminum fittings offer good corrosion resistance. Use them in low-pressure flow applications. To prevent cracking, do not tighten more than a 1/4-turn past hand tight.



McMASTER-CARR <small>CAD</small>	PART NUMBER 44705K382
http://www.mcmaster.com © 2014 McMaster-Carr Supply Company <small>Information in this drawing is provided for reference only.</small>	Plug Square-Head Plug

The information in this 3-D model is provided for reference only.